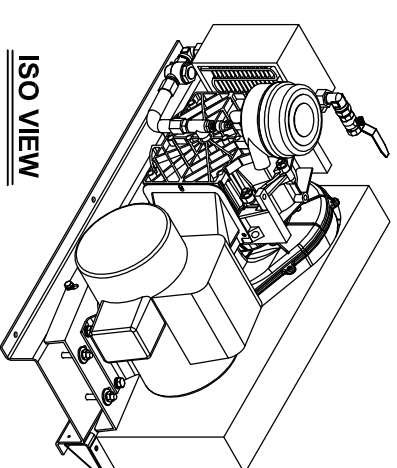
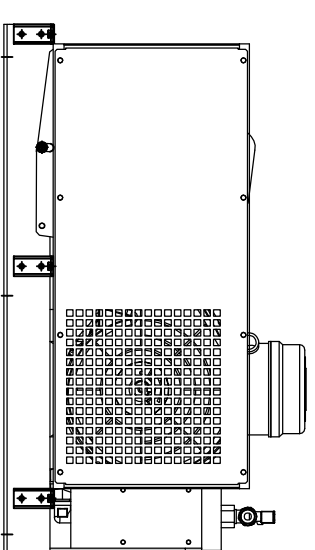
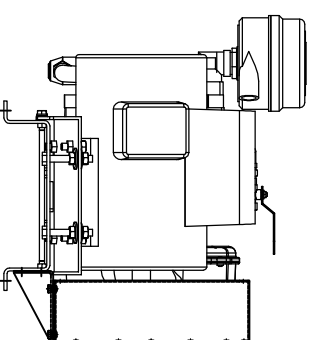
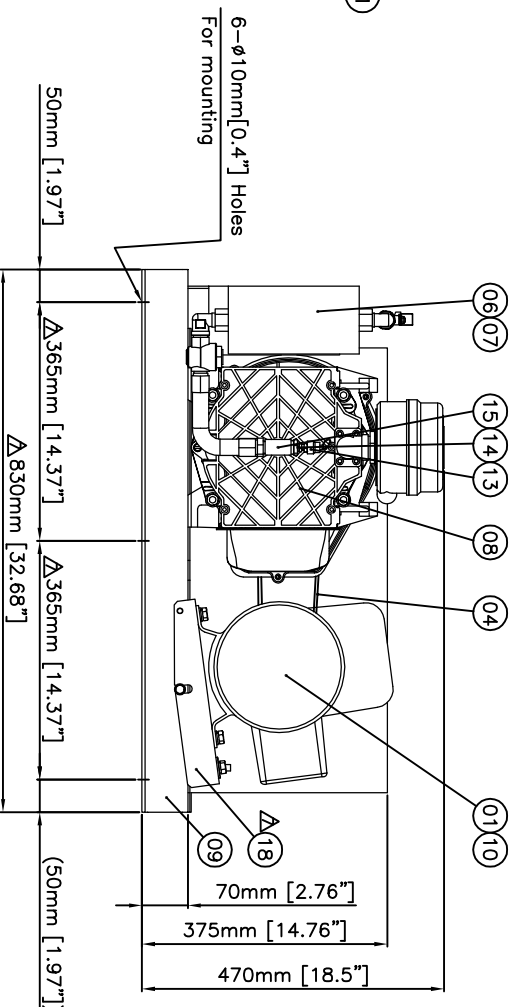
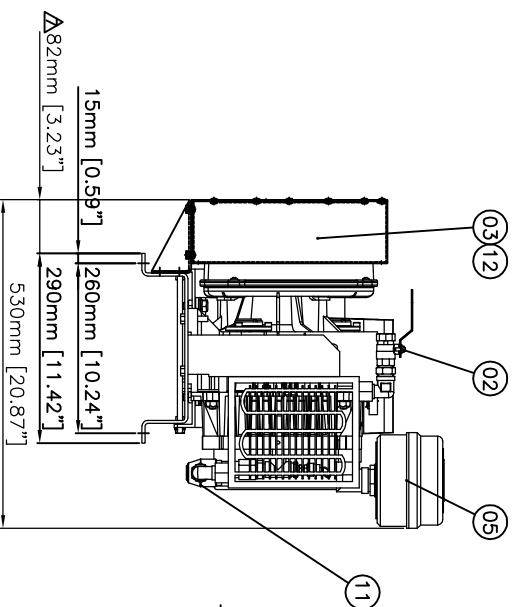
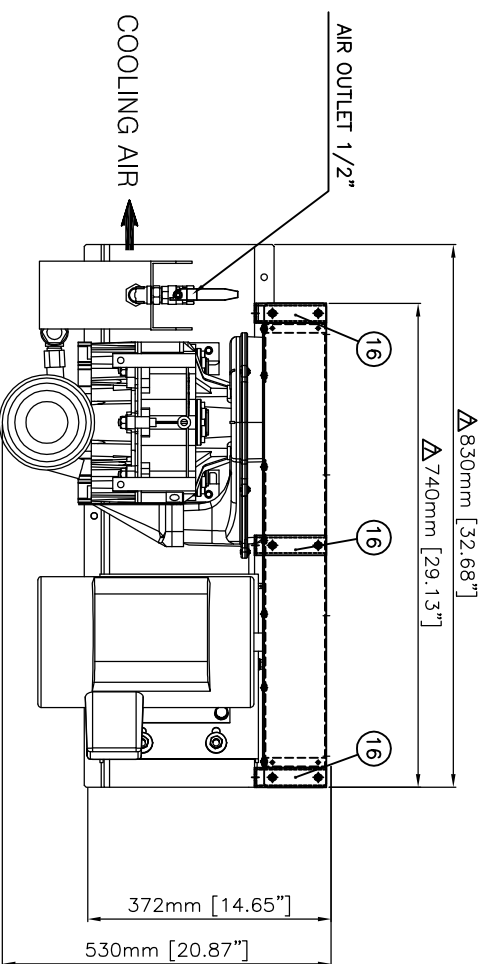


COMPRESSOR SPECIFICATION

| | |
|-------------------------|-------------------------------------|
| AIR COMPRESSOR MODEL | CSOF-BH3(5)PL(H) & OSB SERIES |
| BASIC MODEL | BC-KL52L(H) or BC-KL32L(H) |
| WORKING PRESSURE (psig) | 90 ~ 110 or 120 ~ 140 |
| FREE AIR DELIVERY (CFM) | 14.1 or 12 |
| ROTATION SPEED (rpm) | 3150 or 2900 |
| V-BELT TYPE | 3V |
| APPROXIMATE WEIGHT (lb) | 264.5 |
| DIMENSION (mm / in) | 830x530x470(mm)/32.68"x20.87"x18.5" |



| D | C | B | A | MARK | REVISION RECORD | DATE | REVISED BY | CHECKED BY | APPD. BY | |
|-----|---------|-----------|-----------|----------------------|--|----------|----------------------------|------------|----------|--------|
| | | | | △x6 | Change of application parts & model. | 09.03.02 | S.J.PARK | | | |
| | | | | △x3 | Change of application parts | 09.05.25 | S.J.PARK | | | |
| | | | | △x12 | Added of motor base & Change of outside dimensions | 12.05.15 | S.J.PARK | | | |
| QTY | DRY QTY | PARTS NO. | PARTS NO. | PART NAME | MATERIAL | TREAT. | DIMENSION | MTL. | FINED. | WEIGHT |
| 1 | 1 | 01 | 01 | MOTOR | - | - | - | - | - | - |
| 1 | 1 | 02 | 02 | OUTLET VALVE | - | - | G8020104(15A) | - | - | - |
| 1 | 1 | 03 | 03 | BELT COVER1 | - | - | AC318017 | △ | Change | - |
| 1 | 1 | 04 | 04 | BELT | - | - | TABLE | - | - | - |
| 1 | 1 | 05 | 05 | INTAKE FILTER SET | - | - | ACCP986 | - | - | - |
| 1 | 1 | 06 | 06 | AFTER COOLER | - | - | AC302497 | - | - | - |
| 1 | 1 | 07 | 07 | COOLER SUPPORTER | - | - | AC302199-1 | - | - | - |
| 1 | 1 | 08 | 08 | SCROLL AIR END | - | - | BC-KL52L(H) or BC-KL32L(H) | - | - | - |
| 1 | 1 | 09 | 09 | COMMON BASE | SS400 | - | AC302198-3 | - | - | - |
| 1 | 1 | 10 | 10 | MOTOR PULLEY | GC200 | - | TABLE | - | - | - |
| 1 | 1 | 11 | 11 | CHECK VALVE | - | - | G8040002 | - | - | - |
| 1 | 1 | 12 | 12 | BELT COVER2 | - | - | AC318018 | △ | Change | - |
| 1 | 1 | 13 | 13 | SAFETY VALVE | - | - | - | - | - | - |
| 1 | 1 | 14 | 14 | BUSHING | - | - | C2150002(P13/B&P11/4) | - | - | - |
| 1 | 1 | 15 | 15 | TEE | - | - | C2120003(P13/8) | - | - | - |
| 3 | 3 | 16 | 16 | SUPPORTER-BELT COVER | SCP1 | - | AC318019 | △ | Change | - |
| 1 | 1 | 17 | 17 | SUPPORTER-BELT COVER | SCP1 | - | AC311998 | - | - | - |
| 1 | 1 | 18 | 18 | MOTOR BASE | SS400 | - | - | - | - | - |

NOTE
1. MINIMUM CLEARANCE
FOR MAINTENANCE : 600mm EACH DIRECTION

| | | | | | |
|---------------------------------------|------------------|-----------------------|--------------------------------------|-----------------|-----------|
| TOLERANCES UNLESS OTHERWISE SPECIFIED | | PRODUCT NAME | | TITLE | |
| ± IT14 | | SCROLL AIR COMPRESSOR | | OUTSIDE DRAWING | |
| MODEL | CSOF-BH3(5)PL(H) | OSB SERIES | COAIRE/Ohio Medical Compressor World | | |
| DWN. BY | S.J.PARK | DESIGNED BY | CHKD. BY | APPD. BY | REFERENCE |
| 2009.01.15 | S.J.PARK | 2009.01.15 | S.J.PARK | | DRW. NO. |
| KYUNGWON MACHINERY CO.,LTD. KOREA | | AC302165 | | | |
| REV. 7 | | | | | |